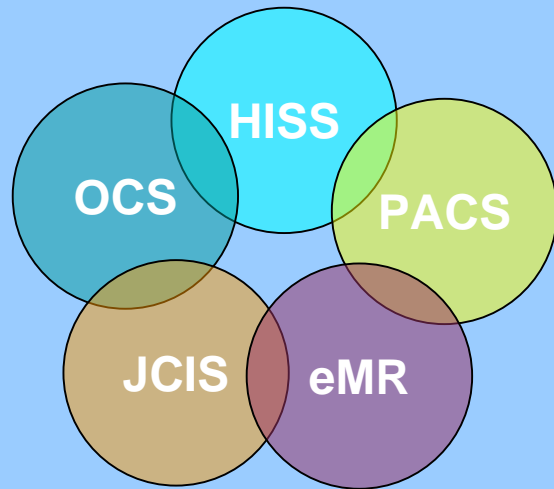


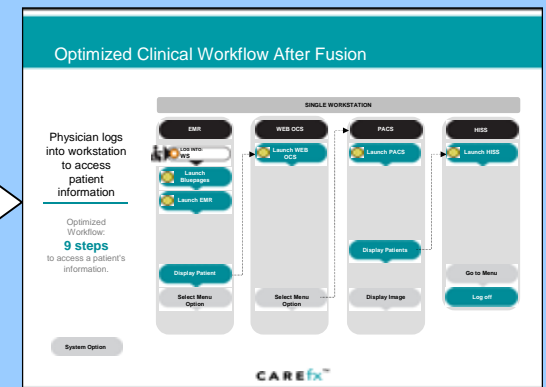
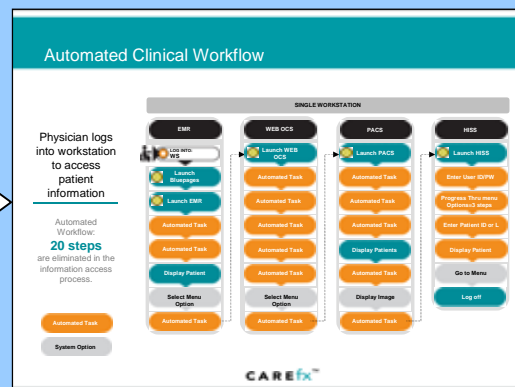
# Context Management



Context Manager software allows information in separate applications at the point of care to refer to the same clinical subject such as user or patient. This means, for example, that when a clinician signs onto one application and selects a patient, all other applications on the desktop perform the same sign-on and select the same patient.

## The Benefits

- Manage same patient across all applications
- Reduce time to access patient information
- Streamlined workflow
- Increase end user productivity
- Increase end user satisfaction
- Improved safety (reduction in error)
- Supporting the trusts IT strategic plan



"I'm saving 2-3 hours a day. This increases the time that I can spend with patients and increases patient satisfaction".